



Lake Washington School District

Eastlake High School

400 228th Ave. N.E., Sammamish, WA 98074 | 425 936-1500



Eastlake Credo: At Eastlake, through intentional actions, we create an environment where students and staff feel safe, appreciated and loved. This is Eastlake. This is home. This is family. **WSPS**.

Principal Message

Dear Wolves,

Eastlake High School works to embed our Mission and Values into the fabric of our school through a focus on five goals.

Eastlake Common Goals

- Support students through a positive, personalized and inspiring culture
- Engage and challenge students through well-designed instruction
- Support students in their development of character and citizenship
- Provide students the time and support to meet our high expectations
- Provide students with the knowledge and skills to make thoughtful decisions in high school and beyond

Previously I explained our efforts to help students make thoughtful decisions as they choose classes, and begin to determine their future ambitions. Another central goal focuses on creating a positive, personalized and inspiring culture both inside and outside the classroom. In addition to the efforts of our leadership students, our coaches remain committed to providing an incredible experience for students in the pod, on the course or between the lines on the court. Our club advisors also commit themselves to providing an amazing experience for students, allowing them to learn while pursuing their passions. These activities also educate, teaching life lessons about effort, teamwork and perseverance, important concepts in our Eastlake Values.

Teachers also make an intentional effort to create a positive, personalized and inspiring culture. We work as a staff to consistently show up with a positive demeanor. We learn strategies for developing quality student relationships and how to establish a classroom belief in growth mindset, where students understand that intelligence is fluid not fixed, where they believe that with practice and perseverance they can learn to draw or be good at math.

Teachers also understand that quality relationships improve student learning. That's why they stand at their doors to welcome students prior to class. That's why they smile, ask students questions about their lives and honestly listen to the answers. That's why they use names when they call on students in class.

It's all these little things that allow big things to happen. That's how we try to make every student feel like school is just an extension of home.

WSPS

Chris Bede, Principal

Quick Links

[Eastlake Website](#)

[Daily Bell Schedule](#)

[Flexisched](#)

[Attendance](#)

[EHS PTSA](#)

Schedule week of November 6th-

No school Friday November 10th in observance of Veterans Day. Click [here](#) for this weeks schedule.

Eastlake Drama Presents - Moon Over Buffalo:

Eastlake High School Drama presents Ken Ludwig's Moon Over Buffalo! Come see the hilarious comedy that Carol Burnett starred in on Broadway!

Performances are Thursday, Friday and Saturday nights at 7 pm. There is a matinee performance on Saturdays at 1pm. House opens half an hour before showtime.

Tickets are \$9 general admission and \$7 students/seniors/staff. EHS accepts cash or check.

This show is rated PG-13.

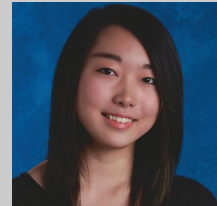
Sammamish Rotary Student of the Month - Jamie Lee

"Jamie is an exceptional young woman and a top-notch student. As a 10th grader, before she was even in my class, Jaime approached me with the idea of starting an Eastlake Chapter of the National English Honor Society. I was taken aback by her ambition and maturity. Many students would not approach they don't know with a somewhat risky idea.

I agreed to be the staff sponsor for the club, but Jaime has continued to work with her peers to set things up. I have watched her run meetings, establish a positive culture within the club, and show real leadership potential.

Now she is in my AP English class and her ambition, intelligence, and creativity continue to emerge daily. Our Humanities department has 28 teachers and we are proud to have a student win the award who has been such a brilliant representative of English to the entire school"

-Rob Jones Eastlake Humanities teacher.



Don't Forget to Turn Your Clocks Back

Daylight Savings time ends Sunday November 5th. Don't forget to turn your clocks back!



College, Counseling and Career News:

Eastlake College Visits for the Week of 10/30

Full college visit calendar and [sign-ups](#) on PowerSchool

College Visits

Portland State University	Portland, OR	11/8, 8:00 am
---------------------------	--------------	---------------



Pacific Lutheran University	Tacoma, WA	11/8, 9:15 am
Whittier College	Whittier, CA	11/8, 10:30am
University of Hawaii	Honolulu, HI	11/9, 10:30am
Embry-Riddle Aeronautical University	Prescott, AZ	11/16, Wolf Time
United States Military Academy (West Point)	West Point, Highlands, NY	11/21, Wolf Time

College Application Working Sessions

Thursday, 11/9, Wolf Time

Seniors, bring your laptop, application, essays, and questions. Get answers + time to work.

Save the Date College Bound Resource Fair for Students with Disabilities

February 3, 2018, 9 am-12 pm, Bellevue College Main Campus

Open to 9th-12 graders, high school grads, parents, educators and service providers. Learn about a variety of local college and non-college supports. For more [information](#) or to RSVP, visit www.bellevuecollege.edu/ds/college-bound

Career Spotlight Events

Kirkland Investor Sharks

Saturday, November 4, 7:00 pm

Four regional start-up companies present their ideas and products to a world-class panel of the biggest investors in the Seattle area, who will have the chance to discover the next big thing. This Shark Tank-style event has all of the fascination of the show, but live and local. Get tickets today! Use code SHARK! to get free tickets.

Insights to Engineering and Manufacturing Night

Wednesday, November 15, 6:30-8:30 pm, Lake Washington High School

Learn about courses and opportunities at LWSU Middle and High Schools and a mix of professional and post-secondary opportunities. If you or someone you know works in engineering and manufacturing and would like to [participate](#), please contact mkristjanson@lwsd.org.

Eastlake Athletics -



Read about the WOLVES in action this week [here](#).

**Congratulations Eastlake Volleyball Kingco Champions!
Great 3-2 victory over Skyline to take the title!**



Winter Sports Registration continues: All Winter athletes must be registered by November 9th to be eligible on Monday November 13th for basketball try-outs and wrestling, swim & dive practice. Gymnastics begins this Monday November 6th. For information about registration please visit the [Eastlake website](#).

Visit [KINGCOATHLETICS](#) for all Eastlake sports schedules and standings.

Senior Photos

Submit Your Senior Photo For the Yearbook!

Senior photos need to be submitted digitally. **Deadline is January 5, 2018!**

Please adhere to the following guidelines:

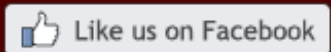
- Images should be "portrait" style with head and shoulders showing.
- Please DO NOT submit landscape photos!
- The head should be approximately 1/2 the total width of the photo.
- Avoid accessories such as cars, animals, weapons, musical instruments.
- Students should be appropriately dressed to meet the school dress code.



- Digital images should be at least 300 dpi and in a .jpg, .tiff or eps format - Word, excel, publisher or other formats will not be accepted.
- Be sure to complete ALL requested fields so the image is assigned to the correct student.

All photos are to be uploaded to the address below. This will put the photos directly into the yearbook Program: <https://images.jostens.com/408913603>. You should be taken directly to a spot to upload the photo. If the systems asks for a Username, enter in the series of numbers at the end of the link (408913603).

If you have any questions, concerns, or issues regarding senior photo submittal, please contact the Yearbook adviser, Meghan Delaney at mdelaney@lwsd.org.



EHS | 425 936-1500 | 400 228th Ave. N.E., Sammamish, WA 98074